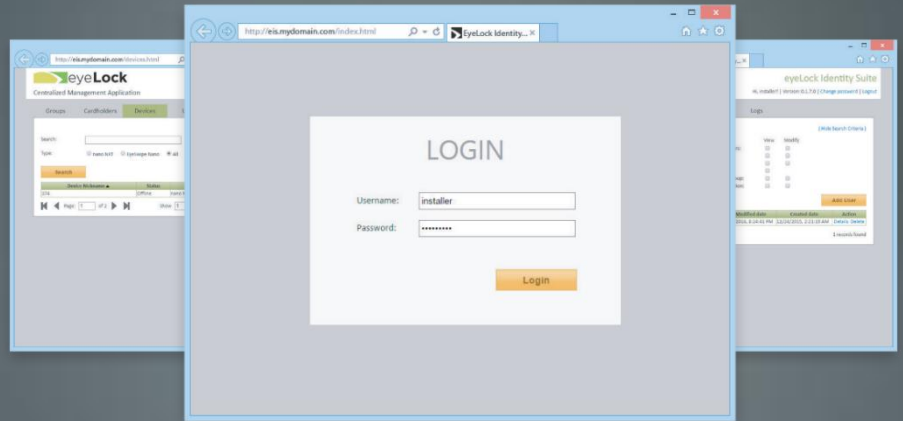


## EyeLock Identity Suite (EIS)

Biometric identity management platform supporting EyeLock devices.



### HIGH SECURITY MADE SIMPLE

EyeLock Identity Suite (EIS) is an identity management software server platform designed to manage and monitor EyeLock iris recognition devices. It performs the following functions:

- ✓ **Database synchronization across multiple EyeLock devices.** EyeLock devices are interoperable. Number of supported devices is practically unlimited.
- ✓ **Multimodal operation.** EIS supports iris and facial recognition devices.
- ✓ **Enrolling user's biometrics.** EIS drives the enrollment process via connected devices and associates the biometric template with a cardholder record.
- ✓ **Backend Biometric matching.** If the database size exceeds the device capacity, typically 20,000 users, or in some other circumstances, the biometric matching can be performed with the EIS server Network Matcher component. The Network Matcher is also used to perform verification checks during user enrollment to ensure that each user is enrolled only once.
- ✓ **Synchronization of device configuration settings.** Connected devices may be split into groups, each with different settings.
- ✓ **Distributing device firmware updates.**
- ✓ **System event logging.**
- ✓ **Backend of logical access.** EIS can serve as a biometric identity provider in logical access systems.
- ✓ **Physical and logic access control within the same biometric system.** EIS allows operating systems where some selected devices are used for physical facility access while other devices provide logical (login) access to computing devices of the same network.
- ✓ **Off-the-shelf integration with most common brands of Access Control Systems (ACS).** Certain ACS brands support biometric enrollment directly via the ACS application.
- ✓ **Integration with other 3<sup>rd</sup> party systems.** The public API of EIS is available and provided as part of the standard EIS installation package.
- ✓ **Active Directory integration** is used to authenticate EIS operators and for internal authentication of communication between EIS components.
- ✓ **Elementary Access Control System.** When installed standalone, EIS provides basic ACS functionality including cardholder groups and door access operations.
- ✓ **Support of multiple standard and custom physical access card formats.** EIS supports most common card formats and allows configuring custom card types. EIS also supports multiple card formats within the same system.
- ✓ **Support for Template on Card (Portable Template).** EIS supports storing iris biometrics on individual access control cards instead of in a centralized database for additional security.

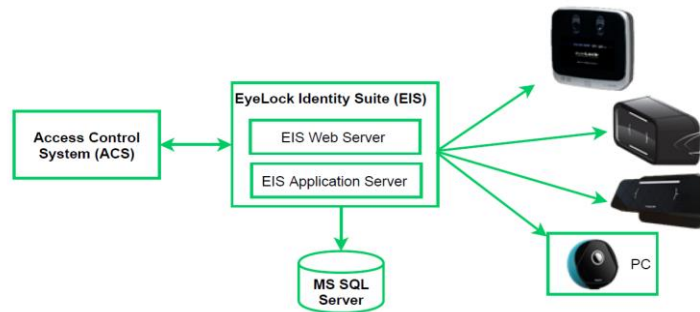
## HARDWARE REQUIREMENTS

EyeLock Identity Suite (EIS) is a Windows application with a browser-based access to its Web Server component. The data persists in Microsoft SQL database. Small and development systems can be installed on Windows 10 Pro computers.

SERVER	OS	SOFTWARE
<b>Web Server</b>	Windows Server 2012 x64 Windows Server 2012 R2 x64 Windows Server 2016 x64 Windows Server 2019 x64	IIS 6.x-7.x .NET Framework 4.8
<b>Application Server</b>	Windows Server 2012 x64 Windows Server 2012 R2 x64 Windows Server 2016 x64 Windows Server 2019 x64	.NET Framework 4.8
<b>Database Server</b>	Windows Server 2012 x64 Windows Server 2012 R2 x64 Windows Server 2016 x64 Windows Server 2019 x64	Microsoft SQL Server 2012 R2 Microsoft SQL Server 2014 Microsoft SQL Server 2016 Microsoft SQL Server 2017 Microsoft SQL Server 2019

## ACCESS CONTROL INTEGRATIONS

EyeLock Identity Suite (EIS) can operate stand-alone or integrated with existing Access Control Systems. Existing off-the-shelf integrations are listed in the table. The integration includes cardholder synchronization. For the integrations labeled with "\*", the biometric enrollment can be performed directly within the access control system user interface.



ACCESS CONTROL SYSTEM	VERSIONS
<b>LENEL S2</b>	<b>LenelS2 OnGuard 8.1 and 8.2</b>
<b>C-CURE 9000 *</b>	<b>Software House C-CURE 9000 2.60 C-CURE 9000 2.90 and 2.90 Enterprise C-CURE 9000 3.0 and 3.0 Enterprise</b>
<b>Genetec *</b>	<b>Genetec GSC 5.9 Genetec GSC 5.11</b>
<b>PACOM *</b>	<b>Pacom GMS 4.4</b>
<b>Honeywell</b>	<b>Honeywell Pro-Watch 4.5 and 5.5</b>
<b>AMAG TECHNOLOGY</b>	<b>AMAG Symmetry 8.0 AMAG Symmetry 9.3 and 9.3 HSE</b>
<b>OPEN OPTIONS*</b> ACCESS TECHNOLOGY	<b>Open Options DNA Fusion 8.1 and 8.3</b>
<b>RS</b>	<b>RS2 Access It! 7.0 and 9.1.1</b>
<b>AVIGILON</b> a Motorola Solutions Company	<b>Avigilon ACM 5.12.0 Avigilon ACM 6</b>
<b>KANTECH</b>	<b>Kantech 8.60</b>
<b>PSIA</b>	<b>PSIA PLAI 3.1</b>